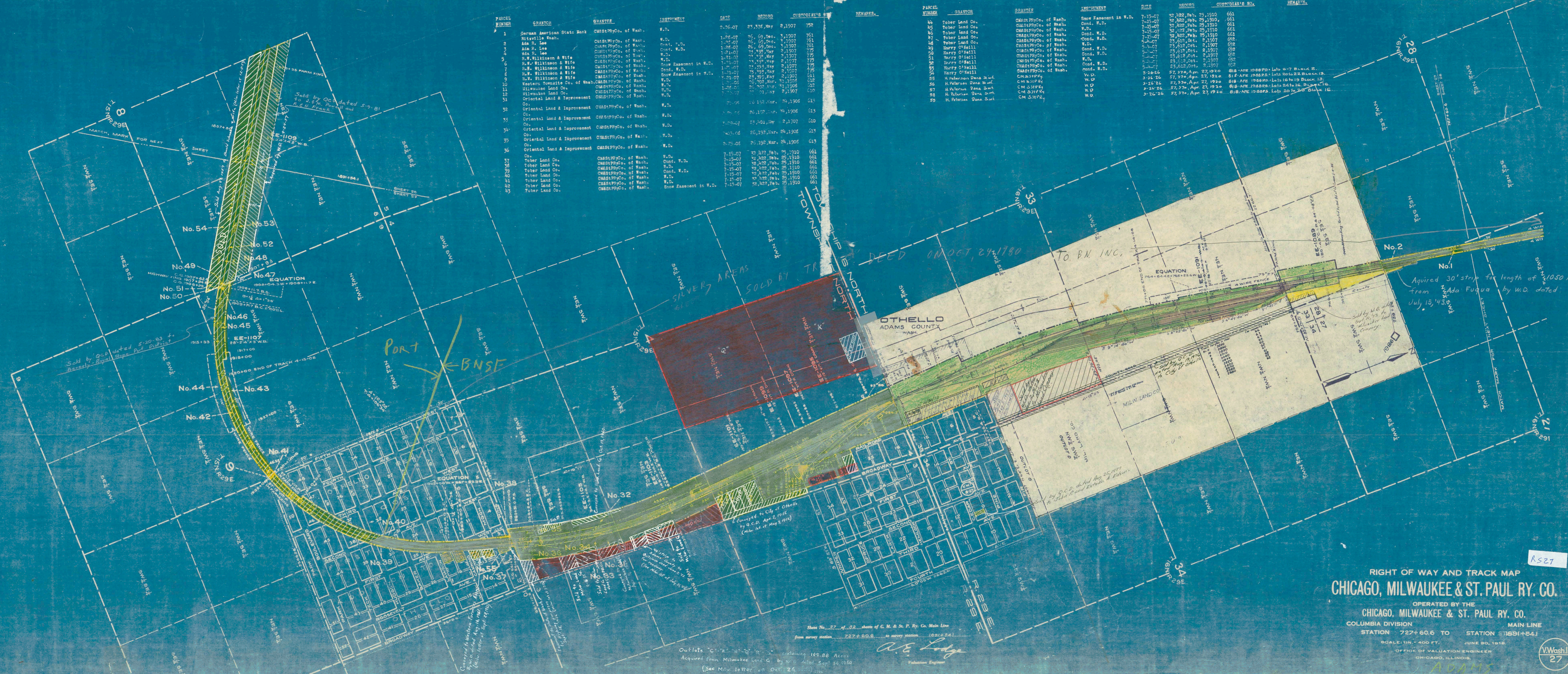


PARCEL NUMBER	GRANTOR	GRANTEE	INSTRUMENT	DATE	RECORD	CUSTODIAN'S NO.	
1	German American State Bank	CM&STP Ry. Co. of Wash.	W.D.	2-26-07	25,376, May	2,1907	752
2	Hittville Wash.	CM&STP Ry. Co. of Wash.	W.D.	1-26-07	26, 69, Dec.	3, 1907	761
3	Ada R. Lee	CM&STP Ry. Co. of Wash.	Cont. W.D.	1-26-07	26, 69, Dec.	3, 1907	761
4	Ada R. Lee	CM&STP Ry. Co. of Wash.	W.D.	1-26-07	26, 69, Dec.	3, 1907	761
5	H.W. Wilkinson & Wife	CM&STP Ry. Co. of Wash.	W.D.	1-21-07	23, 197, May	2, 1907	772
6	H.W. Wilkinson & Wife	CM&STP Ry. Co. of Wash.	W.D.	1-21-07	23, 197, May	2, 1907	772
7	H.W. Wilkinson & Wife	CM&STP Ry. Co. of Wash.	Snow Easement in W.D.	1-21-07	23, 197, May	2, 1907	772
8	H.W. Wilkinson & Wife	CM&STP Ry. Co. of Wash.	Cont. W.D.	1-21-07	23, 197, May	2, 1907	772
9	H.W. Wilkinson & Wife	CM&STP Ry. Co. of Wash.	W.D.	1-21-07	23, 197, May	2, 1907	772
10	Western Tommie Co. of Wash.	CM&STP Ry. Co. of Wash.	W.D.	2-21-07	23, 392, Mar.	2, 1907	811
11	Milwaukee Land Co.	CM&STP Ry. Co. of Wash.	W.D.	1-24-07	25, 202, Mar.	3, 1908	812
12	Milwaukee Land Co.	CM&STP Ry. Co. of Wash.	W.D.	1-24-07	25, 202, Mar.	3, 1908	812
13	Oriental Land & Improvement Co.	CM&STP Ry. Co. of Wash.	W.D.	1-23-07	25, 202, Mar.	3, 1908	812
31	Oriental Land & Improvement Co.	CM&STP Ry. Co. of Wash.	W.D.	2-25-08	26, 192, Mar.	24, 1908	813
32	Oriental Land & Improvement Co.	CM&STP Ry. Co. of Wash.	W.D.	2-25-08	26, 192, Mar.	24, 1908	813
33	Oriental Land & Improvement Co.	CM&STP Ry. Co. of Wash.	W.D.	2-25-08	26, 192, Mar.	24, 1908	813
34	Oriental Land & Improvement Co.	CM&STP Ry. Co. of Wash.	W.D.	2-25-08	26, 192, Mar.	24, 1908	813
35	Oriental Land & Improvement Co.	CM&STP Ry. Co. of Wash.	W.D.	2-25-08	26, 192, Mar.	24, 1908	813
36	Oriental Land & Improvement Co.	CM&STP Ry. Co. of Wash.	W.D.	2-25-08	26, 192, Mar.	24, 1908	813
37	Tober Land Co.	CM&STP Ry. Co. of Wash.	W.D.	7-15-07	28, 428, Feb.	25, 1910	661
38	Tober Land Co.	CM&STP Ry. Co. of Wash.	Cont. W.D.	7-15-07	28, 428, Feb.	25, 1910	661
39	Tober Land Co.	CM&STP Ry. Co. of Wash.	W.D.	7-15-07	28, 428, Feb.	25, 1910	661
40	Tober Land Co.	CM&STP Ry. Co. of Wash.	Cont. W.D.	7-15-07	28, 428, Feb.	25, 1910	661
41	Tober Land Co.	CM&STP Ry. Co. of Wash.	W.D.	7-15-07	28, 428, Feb.	25, 1910	661
42	Tober Land Co.	CM&STP Ry. Co. of Wash.	W.D.	7-15-07	28, 428, Feb.	25, 1910	661
43	Tober Land Co.	CM&STP Ry. Co. of Wash.	Snow Easement in W.D.	7-15-07	28, 428, Feb.	25, 1910	661

PARCEL NUMBER	GRANTOR	GRANTEE	INSTRUMENT	DATE	RECORD	CUSTODIAN'S NO.	REMARKS
44	Tober Land Co.	CM&STP Ry. Co. of Wash.	Snow Easement in W.D.	7-15-07	28, 428, Feb.	25, 1910	661
45	Tober Land Co.	CM&STP Ry. Co. of Wash.	Cont. W.D.	7-15-07	28, 428, Feb.	25, 1910	661
46	Tober Land Co.	CM&STP Ry. Co. of Wash.	W.D.	7-15-07	28, 428, Feb.	25, 1910	661
47	Tober Land Co.	CM&STP Ry. Co. of Wash.	Cont. W.D.	7-15-07	28, 428, Feb.	25, 1910	661
48	Tober Land Co.	CM&STP Ry. Co. of Wash.	W.D.	7-15-07	28, 428, Feb.	25, 1910	661
49	Harry O'Neill	CM&STP Ry. Co. of Wash.	Cont. W.D.	5-4-07	23, 612, Oct.	2, 1907	698
50	Harry O'Neill	CM&STP Ry. Co. of Wash.	Cont. W.D.	5-4-07	23, 612, Oct.	2, 1907	698
51	Harry O'Neill	CM&STP Ry. Co. of Wash.	Cont. W.D.	5-4-07	23, 612, Oct.	2, 1907	698
52	Harry O'Neill	CM&STP Ry. Co. of Wash.	Cont. W.D.	5-4-07	23, 612, Oct.	2, 1907	698
53	Harry O'Neill	CM&STP Ry. Co. of Wash.	Cont. W.D.	5-4-07	23, 612, Oct.	2, 1907	698
54	Harry O'Neill	CM&STP Ry. Co. of Wash.	Cont. W.D.	5-4-07	23, 612, Oct.	2, 1907	698
55	H. Peterson Dana Sub.	CM&STP Ry. Co. of Wash.	W.D.	3-26-26	27, 370, Apr.	27, 1926	818-AFE 1926PS - Lots 16 to 19 Block 13.
56	H. Peterson Dana Sub.	CM&STP Ry. Co. of Wash.	W.D.	3-26-26	27, 370, Apr.	27, 1926	818-AFE 1926PS - Lots 16 to 19 Block 13.
57	H. Peterson Dana Sub.	CM&STP Ry. Co. of Wash.	W.D.	3-26-26	27, 370, Apr.	27, 1926	818-AFE 1926PS - Lots 16 to 19 Block 13.
58	H. Peterson Dana Sub.	CM&STP Ry. Co. of Wash.	W.D.	3-26-26	27, 370, Apr.	27, 1926	818-AFE 1926PS - Lots 16 to 19 Block 13.
59	H. Peterson Dana Sub.	CM&STP Ry. Co. of Wash.	W.D.	3-26-26	27, 370, Apr.	27, 1926	818-AFE 1926PS - Lots 16 to 19 Block 13.



RIGHT OF WAY AND TRACK MAP  
**CHICAGO, MILWAUKEE & ST. PAUL RY. CO.**  
 OPERATED BY THE  
**CHICAGO, MILWAUKEE & ST. PAUL RY. CO.**  
 COLUMBIA DIVISION MAIN LINE  
 STATION 727+60.6 TO STATION 57091+54.1  
 SCALE: 1" = 400 FT. JUNE 30, 1916.  
 OFFICE OF VALUATION ENGINEER  
 CHICAGO, ILLINOIS

Outlots "C", "K", "H", "Q", "R", "S" containing 109.88 Acres  
 Acquired from Milwaukee Land Co. by W.D. dated Sept 14, 1900  
 (See Milwaukee Letter of Dec. 26, 1900)

*A.E. Ledy*  
 Valuation Engineer

R527

Wash 27